



Caledonian

IEC 60502 Cables

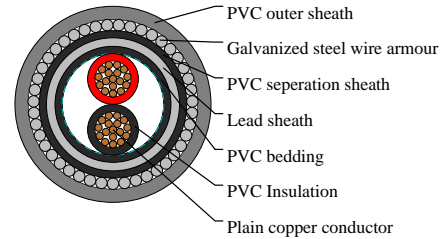
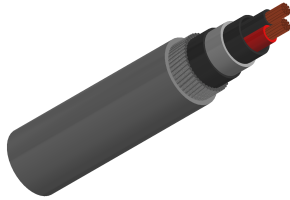
www.caledonian-cables.com

marketing@caledonian-cables.com

600/1000V, PVC Insulated and Lead Sheathed Cables, according to IEC 60502-1 2C16

PVC Insulation with Lead Sheath

Two cores(Galvanized steel wire armoured)



APPLICATIONS

These cables are used for electricity supply in low voltage installation system, They are suitable for installation in indoors and outdoors, in cable ducts, under ground, in power and switching stations, local energy distributions, industrial plants, where there is no risk of mechanical damage. The lead sheath brings an enhanced resistance to aromatic hydrocarbons.

VOLTAGE RATING

600/1000V

CABLE CONSTRUCTION

Conductors:The conductors shall be either of Class 1 or Class 2 of plain or metal-coated annealed copper or of plain aluminium or aluminium alloy, or of Class 5 of plain or metal-coated copper in accordance with IEC 60228.

Insulation:PVC Insulation material and thickness shall be as per IEC 60502-1, PVC material shall be Type A as per IEC 60502-1.

Assembly /Inner Covering:The inner coverings may be extruded or lapped. For cables with circular cores,except cables with more than five cores, a lapped inner covering shall be permitted only if the interstices between the cores are substantially filled. A suitable binder is permitted before application of an extruded inner covering.

The materials used for inner coverings and fillers shall be suitable for the operating temperature of the cable and compatible with the insulating material.For halogen free cables, the inner covering and fillers shall also be halogen free compound.

Lead Sheath Separation Sheath:lead or lead alloy and shall be applied as a reasonably tight-fitting seamless tube The separation sheath shall be of extruded PVC Type ST2 as per IEC 60502-1,or other material refer to outer sheath material.

Armour:Aluminum/galvanized steel/steel wires applied helically over the Inner Covering as per IEC 60502-1, or double aluminum/steel tapes and copper/tinned copper wire can also be manufactured upon request.

Outer Sheath:Outer sheath shall be of extruded PVC Type ST1/ST2 as per IEC 60502-1, Polyethylene type ST3/ST7, Halogen free compound ST8, Polychloroprene, chlorosulfonated polyethylene or similar polymers, type SE1 are also available on request.

COLOUR CODE



Caledonian

IEC 60502 Cables

www.caledonian-cables.com

marketing@caledonian-cables.com

Colour Code:Red,Black

DIMENSION AND PARAMETERS

No. of Cores × Cross-sectional Area	Conductor Diameter	Nominal Insulation Thickness	Nominal Lead Sheath Thickness	Nominal Separation Thickness	Nominal Thickness of Inner Covering	Nominal Sheath Thickness	Nominal Steel Wire Armour Diameter	Nom. Overall Diameter
No. ×mm ²	mm	mm	mm	mm	mm	mm	mm	mm
2×16	4.5	1.0	1.2	1.0	1.0	1.8	1.6	21.8